

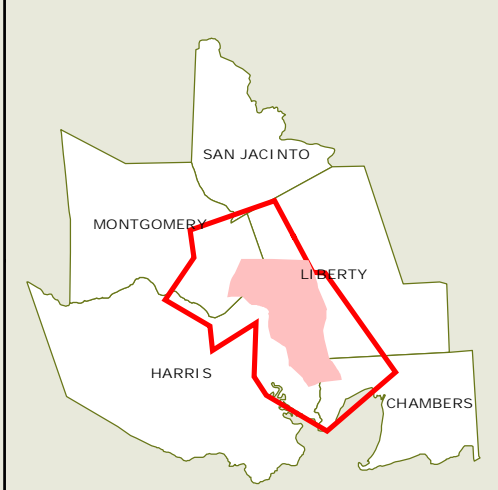
**Legend**

- Area of Influence (AOI)
- Segment H and I-1 Alternatives
- Study Area
- County Boundary
- Interstate Highway
- US Highway
- State Highway
- FM Road
- State Loop
- Segment G
- Segment I-2
- Preferred Alternative

**Notable Features**

- Salt Dome
- Park Area
- Lake Houston
- Dayton Canal System Features
- Coastal Water Authority Canal System Features

0 4.25 8.5 17 Miles

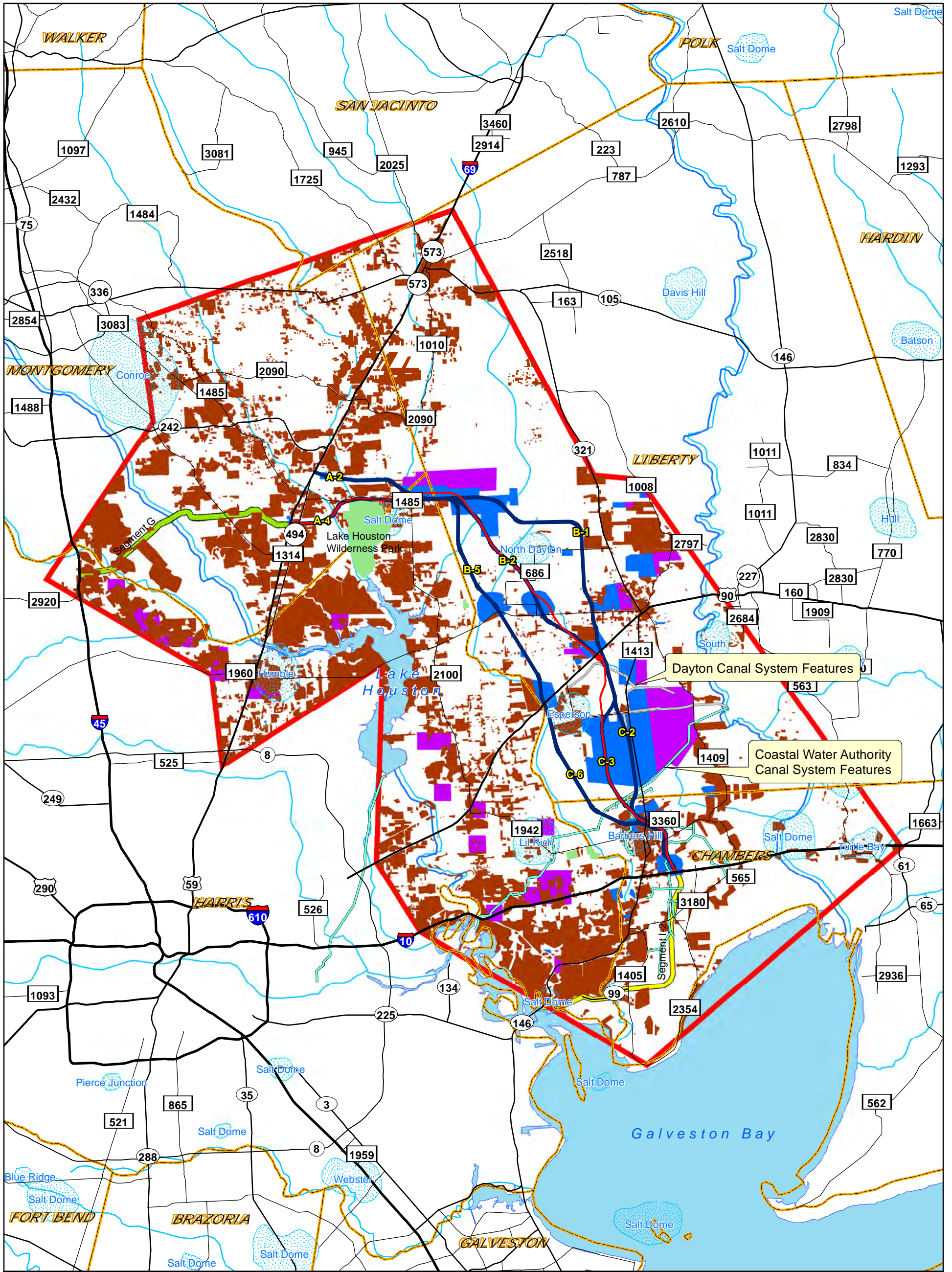


**THE GRAND PARKWAY**

**SH 99: US 59 (N)/I-69 to I-10 (E)  
Grand Parkway  
Segments H and I-1**

**EXHIBIT: 5-1  
Segments H and I-1 Indirect  
Impacts Area of Influence (AOI)**

Source: HNTB, 2007 & 2013, USGS 2004



Legend		Notable Features	
Segment H & I-1 Alternatives	Area of Influence (AOI)	Salt Dome	Park Area
County Boundary	Existing Development	Lake Houston Dayton Canal System Features	Coastal Water Authority Canal System Features
Interstate Highway	US Highway	Segment G	Preferred Alternative
State Highway	FM Road	Segment I-2	
State Loop	Segment I-2		

**SH 99: US 59 (N)/I-69 to I-10 (E)  
Grand Parkway  
Segments H and I-1**

**EXHIBIT: 5-2  
Existing and Future Development  
Within the Area of Influence (AOI)**

Source: HNTB, 2007 & 2013